

ONE-CARE[®]

PEN NEEDLES



Insulin delivery has never been easier...



Gentle

Precisely grinded three bevel tip, electro-polished and lubricated canulas for enhanced comfort

Optimal Insulin Flow

Thin- and Extra-Thin-Wall Technology

Universal Fit

ISO 11608-2 compliant and universal thread design for compatibility with all type A insulin pen injectors

GENTLE

- Electro-polished, silicone-coated, ultra-thin needles guarantee enhanced user comfort
- Easy flow canula with thin-wall and extra-thin wall technology minimizes the time of insulin delivery
- Smooth and quick insertion thanks to special lubrication makes the injection a barely-noticeable experience

CONVENIENT

- Ergonomic design with ribbed housing ensures comfortable grip for secure attachment onto the pen injector
- Color-coded versions for the right needle selection for every patient
- ETO-sterilized and protected with outer cover and easy peel-off tab

UNIVERSAL

- Twist-on universal design for compatibility with most injection pens available on the market
- Tight fit prevents leakages and medication loss
- 100% automated camera-control for quality
- Rigorously tested per international standards for fit, functionality and reliable performance

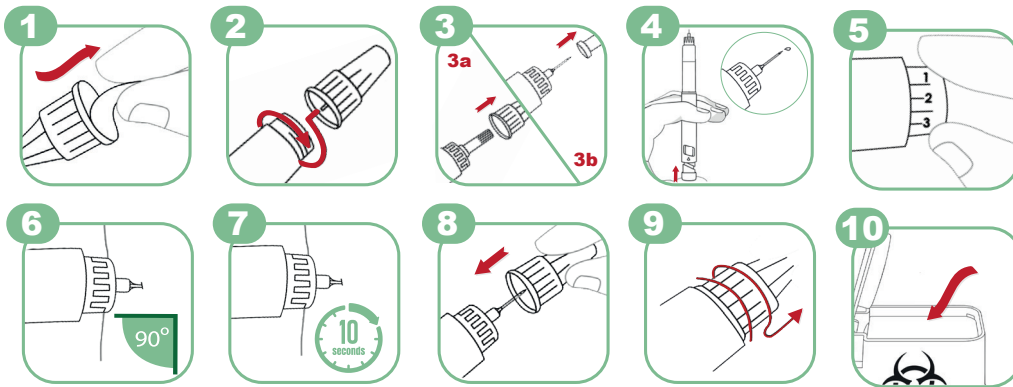
Compatible with all type A insulin pens as per ISO11608-2, including:

C O M P A T I B I L I T Y	Novo Nordisk	NovoPen [®] FlexPen [®] , NovoPen [®] FlexTouch [®] , NovoPen [®] Echo, NovoPen [®] 4, NovoPen [®] 5, InDuo [®] , InnoLet [®] , Victoza [®]
	Eli Lilly	KwikPen [®] , Forteo [®] , Huminsulin [®] , HumaPen [®] , HumaPen [®] Savvio [™] , HumaPen [®] Luxura [™] HD, HumaPen [®] MEMOIR [™]
	Sanofi	Apidra [®] SoloSTAR [®] , ClickSTAR [®] , Lantus [®] SoloSTAR [®] , Toujeo [®] SoloSTAR [®] , AllSTAR [™] , JuniorSTAR [®] , Lyxumia [®] , OptiPen [®] Pro 1
	BD	BD [®] Pen
	Astra Zeneca	Byetta [®]
	Owen Mumford	Autopen [®] Classic, Autopen [®] 24
	B. Braun	Omnican [®] Pen 31
	Ypsomed	Ypsopen [®] , OptiClik [®]
	Berlin Chemie	BerliPen [®] Areo 2/3, BerliPen [®] Areo 301/302, BerliPen [®] Junior, BerliPen [®] Precision
	Haselmeier	Diapen [®] , TactiPen [®]
Bioton	GensuPen [®]	

Brands are trademarks of their respective owners.

INSTRUCTIONS FOR USE

Intuitive and simple handling. Insulin delivery has never been easier...



PRODUCT SELECTION CHART

Available in multiple color-coded versions to address different needs

REF	DIAMETER (G) x DEPTH (mm/in)	COLOR	PACKAGING
3011	33G x 4mm	Pink	100 pcs / box 5,000 pcs / case
3012	32G x 4mm	Light Green	100 pcs / box 5,000 pcs / case
3013	32G x 5mm	Brown	100 pcs / box 5,000 pcs / case
3014	32G x 6mm	Yellow	100 pcs / box 5,000 pcs / case
3015	32G x 8mm	Grey	100 pcs / box 5,000 pcs / case
3016	31G x 4mm	Light Blue	100 pcs / box 5,000 pcs / case
3017	31G x 5mm	Purple	100 pcs / box 5,000 pcs / case
3018	31G x 6mm	Dark Blue	100 pcs / box 5,000 pcs / case
3019	31G x 8mm	Orange	100 pcs / box 5,000 pcs / case
3020	30G x 5mm	Red	100 pcs / box 5,000 pcs / case
3021	29G x 12mm (1/2")	Pink	100 pcs / box 5,000 pcs / case

WWW.ONE-CARE.COM

Americas

Europe

