

# ONE-CARE<sup>®</sup>

SAFETY BLOOD COLLECTION  
WINGED SETS **PRESS & LOCK**



*In-Vein Activation For Safe Needle Retraction*

**Tri-bevel, ultra-sharp, electropolished and lubricated needle**  
for patient comfort



**Thin-Wall Technology Canula** •  
provides for optimal flow and higher tube fill-rates



**Ergonomic wing design**  
permits improved positioning during application



## **PRESS & LOCK Safety Shield**

enables activation of safety shield in-vein or immediately after the blood draw.

- Press the side buttons and pull back to retract the needle into the shield
- Audible click confirms that needle is securely locked



**AFTER USE**

## • **Transparent Tube Holder**

for better visibility of collection tubes filling up with blood, tube holders provided separately or pre-attached



## • **Multi-sampling, universal design Luer**

allows for tight fit to tube holders and multiple blood sample collection from one patient

## • **DEPF-free, low memory and flexible tubing**

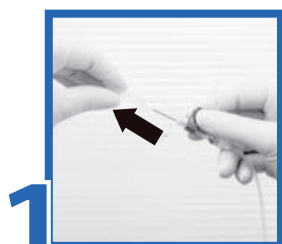
assists in handling and preserves the blood chemical and physiological composition

[WWW.ONE-CARE.COM](http://WWW.ONE-CARE.COM)

**ONE-CARE<sup>®</sup>**  
SAFETY BLOOD COLLECTION  
WINGED SETS **GLIDE & LOCK**

## INSTRUCTIONS FOR USE

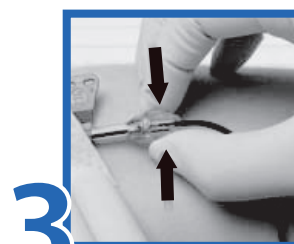
- Intuitive handling with simple steps.



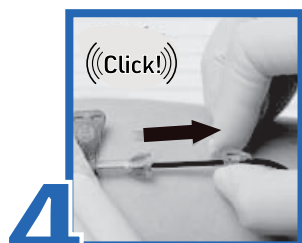
**1** REMOVE PROTECTIVE CAP



**2** PERFORM VENIPUNCTURE



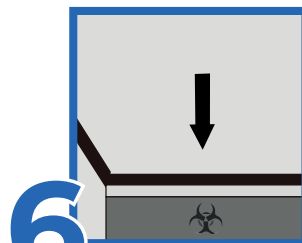
**3** PRESS SIDE BUTTONS OF THE SAFETY MECHANISM



**4** PULL BACK THE NEEDLE HOLDER AND TUBE UNTIL YOU HEAR "CLICK"



**5** ENSURE THAT NEEDLE IS COMPLETELY LOCKED IN SAFETY SHIELD



**6** DISPOSE OF ALL USED MATERIALS IN A SHARPS CONTAINER



## ORDERING INFORMATION

- Available in different needle configurations and with/without pre-attached tube holders:



| CODE | DESCRIPTION - NEEDLE (DIAMETER x LENGTH)  | COLOR  | PACKAGING                             |
|------|---|--------|---------------------------------------|
| 5060 | ONE-CARE® PRESS & LOCK Safety Blood Collection Winged Sets 25G x 3/4", Luer Adapter, 12" Tube | Orange | 50 pcs / box<br>4 bx (200 pcs) / case |
| 5061 | ONE-CARE® PRESS & LOCK Safety Blood Collection Winged Sets 23G x 3/4", Luer Adapter, 12" Tube | Blue   | 50 pcs / box<br>4 bx (200 pcs) / case |
| 5062 | ONE-CARE® PRESS & LOCK Safety Blood Collection Winged Sets 21G x 3/4", Luer Adapter, 12" Tube | Green  | 50 pcs / box<br>4 bx (200 pcs) / case |



|        |  |        |  |
|--------|--|--------|--|
| 5060-H | ONE-CARE® PRESS & LOCK Safety Blood Collection Winged Sets 25G x 3/4", Pre-attached Holder, 12" Tube | Orange | 25 pcs / box<br>20 bx (500 pcs) / case |
| 5061-H | ONE-CARE® PRESS & LOCK Safety Blood Collection Winged Sets 23G x 3/4", Pre-attached Holder, 12" Tube | Blue   | 25 pcs / box<br>20 bx (500 pcs) / case |
| 5062-H | ONE-CARE® PRESS & LOCK Safety Blood Collection Winged Sets 21G x 3/4", Pre-attached Holder, 12" Tube | Green  | 25 pcs / box<br>20 bx (500 pcs) / case |

WWW.ONE-CARE.COM

**MediVena®**  
inspired by innovation

www.medivena.com

**AMERICAS:**  
MediVena  
1 Glenlake Parkway, Ste 700, Atlanta, GA 30328, USA  
+1 404 514 2586 @ info@medivena.com  
**CUSTOMER SERVICE TOLL FREE: 888 270 6457**

**EUROPE:**  
MediVena Sp. z o.o.  
Al. Jana Pawla II 27, 00-867 Warsaw, POLAND  
+48 695 995 700

